

Water Treatment combined with DriSteem humidification

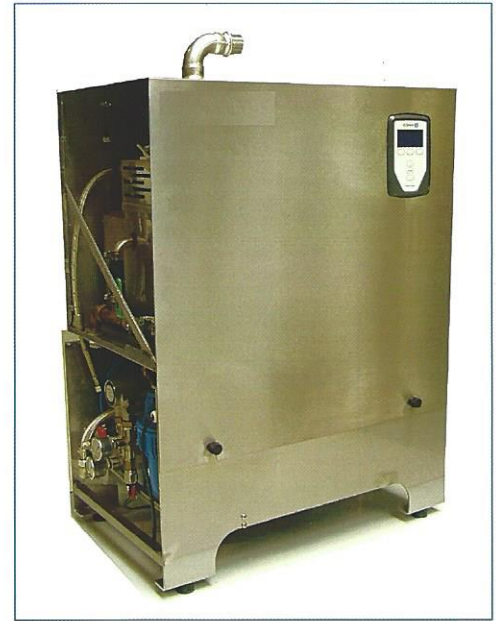
ELECTRIC HUMIDIFIER AND REVERSE-OSMOSIS SYSTEM IN ONE FULLY INTEGRATED, SKID-MOUNTED PACKAGE

Combines two proven products, the Humi-Tech® electric humidifier and a reverse-osmosis system.

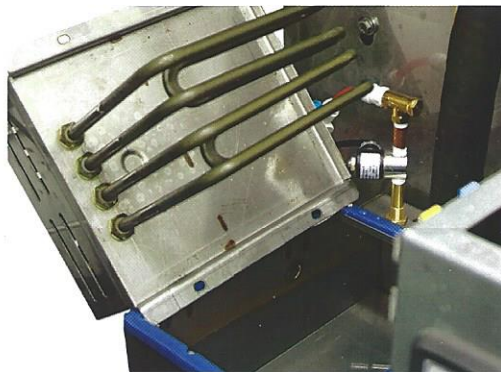
- Water in, clean steam out
- Downtime is virtually eliminated
- Long-term and reliable performance
- Lower maintenance occurrences and cost

NEAR ZERO MAINTENANCE

High purity water means less chalky scale build-up in the heat exchanger, ensuring reliable, long-term humidifier performance.



After 22000 Liters untreated supply water



After 26000 Liters treated supply water



HIGH EFFICIENT DISPERSION OPTIONS FOR THE DRISTEEM LOW-MAINTENANCE HUMIDIFICATION SYSTEM

High-efficiency tube benefits are staggering: Significant energy savings, sizable reduction in downstream heat gain, and substantial reduction in dispersion-generated condensate.



Single Disperion Tube

Low-capacity dispersion for vertical and horizontal airflows

Rapid-sorb® steam dispersion

Multiple Tubes accomodate large loads



Ultra-sorb® steam dispersion

Short absorption distances



Table 3-1:
Low-maintenance humidifier capacities, electrical specifications, and weights

	LMS 2	LMS 4	LMS 6	LMS 8	LMS 16	LMS 21	LMS 25	LMS 30	LMS 34
Max. steam capacity [kg/h]	2,7	5,4	10,9	16,3	21,8	28,6	34	40,9	46,2
Water supply [l/h]	4	7	14	21	28	37	44	53	60
Capacity RO unit [l/h]	60								
Number of RO membranes [pcs]	1								
Min dynamic supply water pressure [Bar]	3								
Min.-max. ambient temperature [°C]	5-40								
Min.-max. water supply temperature [°C]	1-40								
Demineralization efficiency [%]	97 ~99%								
Electrical power supply humidifier [V]	1 x 230	3 x 400	3 x 400	3 x 400	3 x 400	3 x 400	3 x 400	3 x 400	3 x 400
Power consumption humidifier [kW]	2	4	8	12	16	21	25	30	34
Electrical power supply RO pump [V]	1 x 230								
Power consumption RO pump [kW]	0.37								
Dimensions [mm] [height x width x depth]	755 x 655 x 450								
Conductivity RO water [μ S/cm]	5-20								
Control signal	0-10 V , 4-20 mA								
Interoperability BMS (Lontalk,Bacnet,Modbus)	Yes								
Low water inlet pressure alarm	Yes (0.6 bar)								
Water inlet filter 25 μ m	Yes								
Outlet pressure (adjustable)	2-5								
Water connection	3/4 "								